

# 2009

Begin



# 2021

Continue





# COMPANY PROFILE

Focono LED is a professional company that devotes to developing, manufacturing and marketing LED Display.

Since foundation, innovation is the symbol of Focono. The creative products and service have brought us continuous break-through in both sales and development during the past years. Till now our products are well exported to 100 countries with more than 1000 cases all over the world.

At present, Focono is becoming a leading integrated solutions provider in LED industry. And we are gradually optimizing our sales network and localization strategy, appealing to more global partners to join in us.



**Vision:**  
Your Local LED Application.

**Philosophy:**  
Focus on one thing.

**Mission:**  
Serve the world, LED your life.

**Core Value:**  
Hard-working / Self-improving,  
Thanks-giving / Dream-creating.

# CONTENTS

GS series ..... 3  
K series ..... 5  
E series ..... 7  
D series ..... 9



## COMMERCIAL ADVERTISING

## STAGE RENTAL



X series(In) ..... 13  
X series(Out) ..... 15  
S series(In) ..... 17  
S series(Out) ..... 19

Q series ..... 23



## SPORT

## SPECIAL



Glass series ..... 27  
R series ..... 29



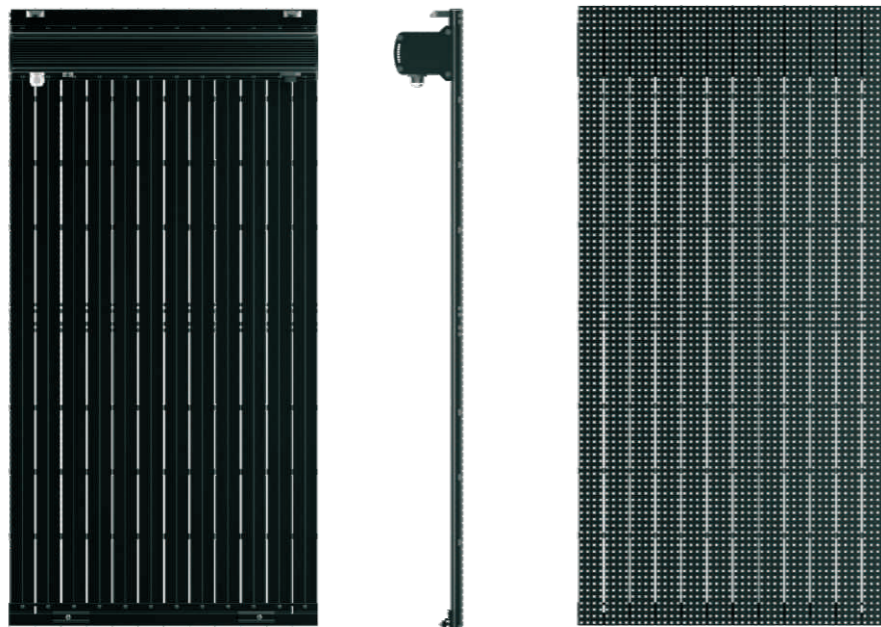
# COMMERCIAL ADVERTISING

# GS series

Outdoor Transparent Curtain Screen

## Features

- ▶ Ultra-light and thin design
- ▶ Independent plug and pull single light bar
- ▶ Unique heat sink design
- ▶ Strong Tail board design
- ▶ P67 high protection
- ▶ Font & Black Service



## Parameters

Value	GS 10	GS 12	GS 15	GS 25	GS 31
Pixel pitch(mm)	10.4	12.5	15.625	25	31.25
Brightness(nits)	6500	7000	8000	7500	7000
Pixel configuration	SMD	DIP	DIP	DIP	DIP
Colours	281 trillion	281 trillion	281 trillion	281 trillion	281 trillion
Refresh rate(Hz)	≥2000	≥2000	≥2000	≥2000	≥2000
Pixel matrix per panel	94X48	40X80	32X64	20X60	16X48
Pixel matrix per sq.m	9216	6400	4096	1600	1024
Viewing angle (H/V)	120/60 deg.	100/60 deg.	100/60 deg.	100/60 deg.	100/60 deg.
Power consumption (W/sq.m)	780/260(max/avg)	480/160(max/avg)	400/130(max/avg)	375/125(max/avg)	300/100(max/avg)
IP rate	IP67/IP67	IP67/IP67	IP67/IP67	IP67/IP67	IP67/IP67
Input voltage (VAC)	110/220	110/220	110/220	110/220	110/220
Panel size(L x H x W mm)	500X1000X101	500X1000X105	500X1000X107	500X1500X107	500X1500X107
Panel weight(kgs)	13(Alu.)	11(Alu.)	10.5(Alu.)	12(Alu.)	9.7(Alu.)

\*Specification subjected to change without prior notice.

## Applications



Shopping mall



Hotel



Building



Airport

## Show Case



# K series

Outdoor Commercial LED Display

## Features

- ▶ Light and thinner
- ▶ Focono new generation module design
- ▶ Front and rear access service
- ▶ Mistake tracking system
- ▶ 140° large viewing angle



The World Longest Lifespan LED Display

## Parameters

Value	K4	K6	K8	K10	K12	K16
Pixel pitch(mm)	4.81	6.4	8	10.67	12.8	16
Brightness(nits)	5000	5500	5500	6000	6000	6000
Pixel configuration	SMD	SMD	SMD	SMD	SMD	SMD
Colours	281 trillion	281 trillion	281 trillion	281 trillion	281 trillion	281 trillion
Refresh rate(Hz)	≥1920	≥1920	≥1920	≥3840	≥3840	≥4800
Pixel matrix per panel	208X208	160X160	128X128	96X96	80X80	64X64
Pixel matrix per sq.m	43264	24414	15625	8784	6104	3906
Viewing angle ( H/V)	140/140 deg.	140/140 deg.	140/140 deg.	140/140 deg.	140/140 deg.	140/140 deg.
Power consumption (W/sq.m)	870/300(max/avg)	870/300(max/avg)	890/310(max/avg)	900/310(max/avg)	860/300(max/avg)	900/310(max/avg)
IP rate	IP65/IP43	IP65/IP43	IP65/IP43	IP65/IP43	IP65/IP43	IP65/IP43
Input voltage (VAC)	110/240	110/240	110/240	100/240	110/240	110/240
Panel size(L x H x W mm)	1000X1000X150	1024X1024X150	1024X1024X150	1024X1024X150	1024X1024X150	1024X1024X150
Panel weight(kgs)	42(steel)	48(steel)	48(steel)	46(steel)	46(steel)	46(steel)

\*Specification subjected to change without prior notice.

## Applications



Shopping mall



Hotel

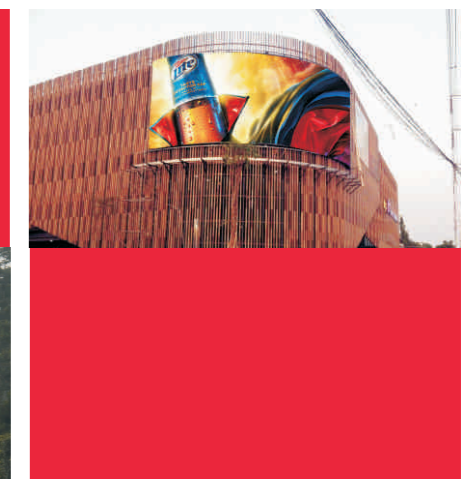
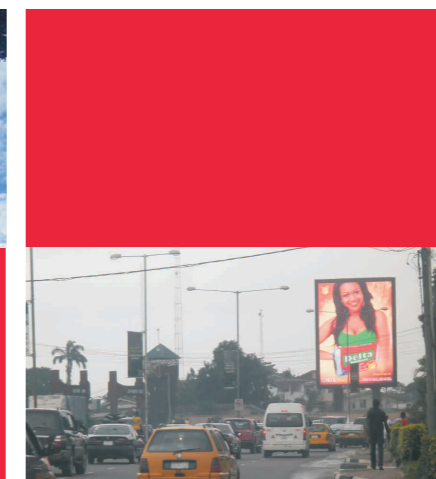


Building



Airport

## Show Case



# E series

Outdoor Fixed Giant LED Display

## Features

- ▶ Ultralight design
- ▶ Easy maintenance
- ▶ Deliberated design
- ▶ 100% waterproof LED module
- ▶ High quality display
- ▶ Super wide viewing angle
- ▶ Mistake tracking system



## Parameters

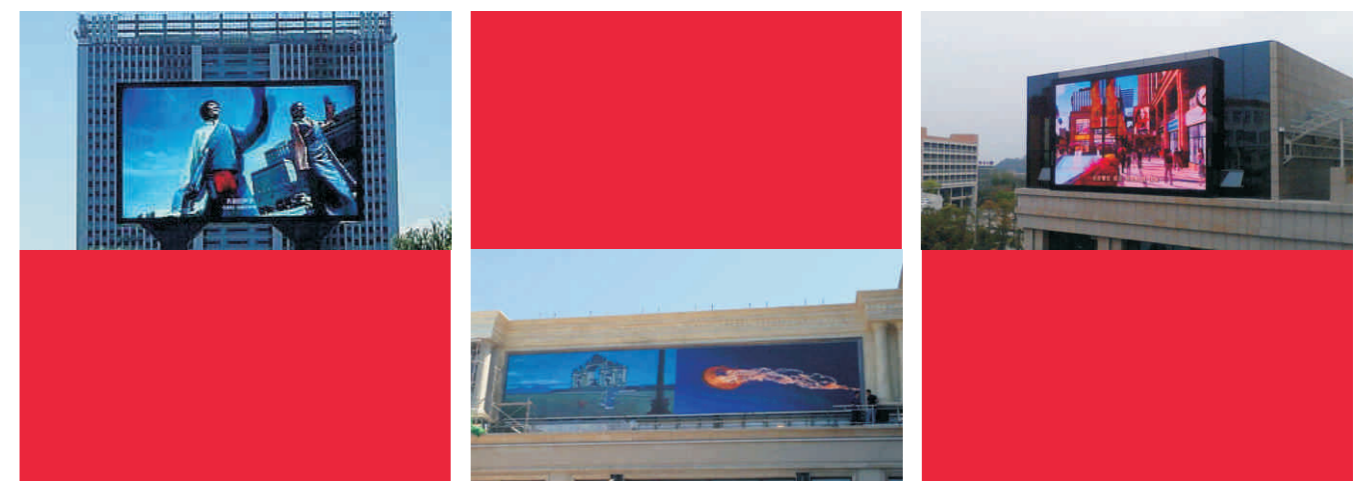
Value	E8	E10	E13	E16
Pixel pitch(mm)	8	10	13.33	16
Brightness(nits)	6000	6500	6000	6500
Pixel configuration	SMD	SMD	SMD	SMD
Colours	281 trillion	281 trillion	281 trillion	281 trillion
Refresh rate(Hz)	>1920	>1920	>1920	>3840
Pixel matrix per panel	120X120	96X96	72X72	60X60
Pixel matrix per sq.m	15625	10000	5628	3906
Viewing angle ( H/V)	140/140 deg.	140/140 deg.	140/140 deg.	140/140 deg.
Power consumption (W/sq.m)	890/310(max/avg)	890/310(max/avg)	850/290(max/avg)	930/320(max/avg)
IP rate	IP65/IP43	IP65/IP43	IP65/IP43	IP65/IP43
Input voltage (VAC)	110/240	110/240	110/240	110/240
Panel size(L x H x W mm)	960X960X110	960X960X110	960X960X110	960X960X110
Panel weight(kgs)	28(steel)	28(steel)	28(steel)	28(steel)

\*Specification subjected to change without prior notice.

## Applications



## Show Case



# D series

Outdoor Fixed Giant LED Display

## Features

- ▶ Ultralight design
- ▶ Light-trapped ventilation
- ▶ Energy-saving
- ▶ Air-conditioner free
- ▶ Easy-assembling
- ▶ 100% waterproof led module



## Parameters

Value	D10
Pixel pitch(mm)	10
Brightness(nits)	8000
Pixel configuration	SMD
Colours	281 trillion
Refresh rate(Hz)	≥3840
Pixel matrix per panel	96X96
Pixel matrix per sq.m	10000
Viewing angle ( H/V)	140/140 deg.
Power consumption (W/sq.m)	930/320(max/avg)
IP rate	IP65/IP43
Input voltage (VAC)	110/240
Panel size(L x H x W mm)	960X960X110
Panel weight(kgs)	24(Alu.)

\*Specification subjected to change without prior notice.

## Applications



Shopping mall

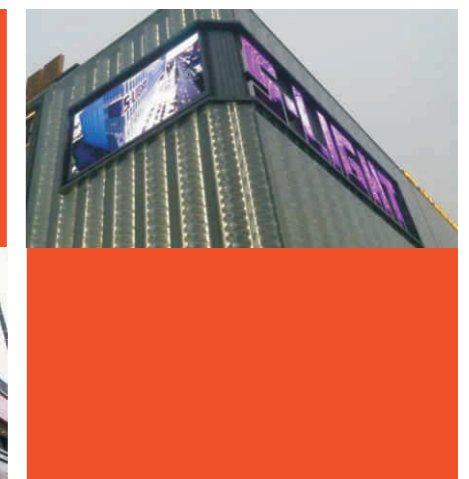
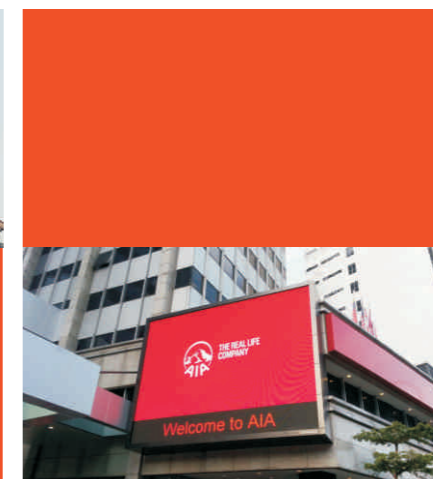


Traffic



Building

## Show Case







# STAGE RENTAL

# X series(s)

Indoor Stage/Rental LED Display

## Features

- ▶ Light and thinner
- ▶ 4"H" performance
- ▶ Fast assembling
- ▶ Mistake tracking system
- ▶ Zero noise design



## Parameters

Value	X2i	X3i	X4i	X5i
Pixel pitch(mm)	2.98	3.91	4.81	5.95
Brightness(nits)	900	900	1000	1000
Pixel configuration	SMD	SMD	SMD	SMD
Colours	281 trillion	281 trillion	281 trillion	281 trillion
Refresh rate(Hz)	≥1080	≥1440	≥1920	≥1440
Pixel matrix per panel	168X336	128X256	104X208	84X168
Pixel matrix per sq.m	112607	65536	43264	28247
Viewing angle ( H/V)	140/140 deg.	140/140 deg.	140/140 deg.	140/140 deg.
Power consumption (W/sq.m)	600/210(max/avg)	700/240 (max/avg)	710/240(max/avg)	650/220(max/avg)
IP rate	IP40/IP20	IP40/IP20	IP40/IP20	IP40/IP20
Input voltage (VAC)	110/240	110/240	110/240	110/240
Panel size(L x H x W mm)	500X1000X80	500X1000X80	500X1000X80	500X1000X80
Panel weight(kgs)	14(Alu.)	14(Alu.)	14(Alu.)	14(Alu.)

\*Specification subjected to change without prior notice.

## Applications



Nightclub



Concert



Exhibition



Press conference

## Show Case



# X series(s)

Outdoor Stage/Rental LED Display

## Features

- ▶ Light and thinner
- ▶ 4"H" performance
- ▶ Fast assembling
- ▶ Mistake tracking system
- ▶ Zero noise design

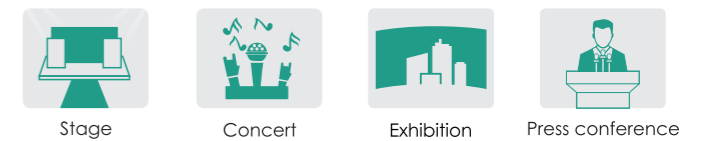


## Parameters

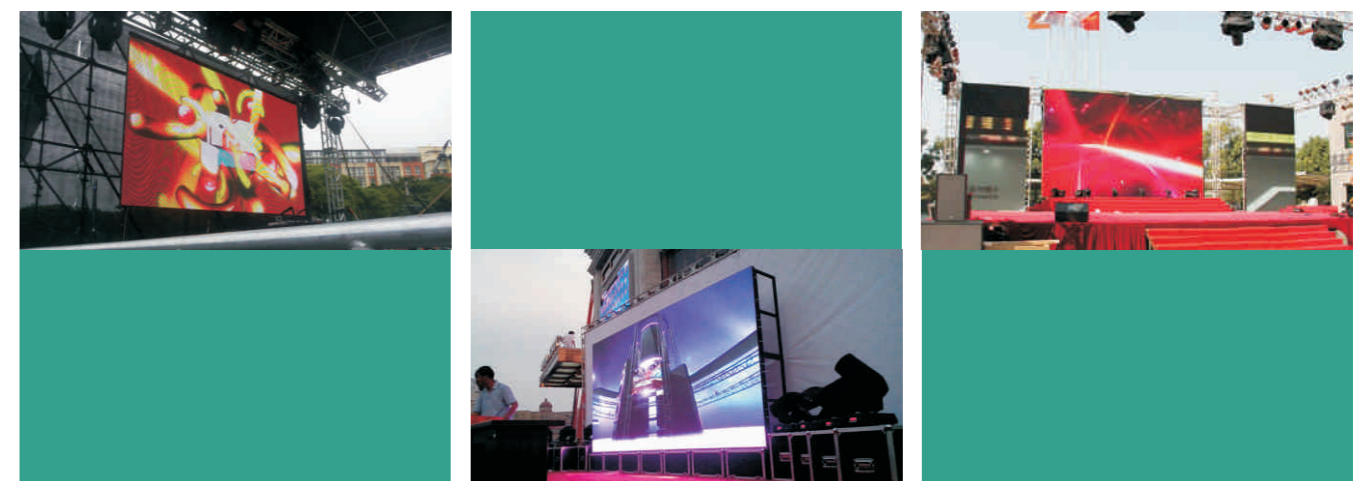
Value	X3	X4	X5	X6	X8
Pixel pitch(mm)	3.91	4.81	5.95	6.25	8.33
Brightness(nits)	4000	4000	4000	4000	5500
Pixel configuration	SMD	SMD	SMD	SMD	SMD
Colours	281 trillion	281 trillion	281 trillion	281 trillion	281 trillion
Refresh rate(Hz)	≥1920	≥1920	≥1920	≥1920	≥1920
Pixel matrix per panel	128X256	104X208	84X168	80X160	60X120
Pixel matrix per sq.m	65536	43264	28247	25600	14412
Viewing angle ( H/V)	140/140 deg.	140/140 deg.	140/140 deg.	140/140 deg.	140/140 deg.
Power consumption (W/sq.m)	800/280(max/avg)	750/260(max/avg)	600/210 (max/avg)	600/210 (max/avg)	800/280 (max/avg)
IP rate	IP65/IP43	IP65/IP43	IP65/IP43	IP65/IP43	IP65/IP43
Input voltage (VAC)	110/240	110/240	110/240	110/240	110/240
Panel size(L x H x W mm)	500X1000X80	500X1000X80	500X1000X80	500X1000X80	500X1000X80
Panel weight(kgs)	15(Alu.)	15(Alu.)	15(Alu.)	15(Alu.)	15(Alu.)

\*Specification subjected to change without prior notice.

## Applications



## Show Case



# S series(s)

Indoor Rental LED Display

## Features

- ▶ 4"H" performance
- ▶ Fast assembling
- ▶ Mistake tracking system
- ▶ Light and thinner



## Parameters

Value	S2i	S3i	S4i	S5i	S6i
Pixel pitch(mm)	2.97	3.91	4.81	5.95	6.25
Brightness(nits)	1100	1200	1200	1200	1200
Pixel configuration	SMD	SMD	SMD	SMD	SMD
Colours	281 trillion	281 trillion	281 trillion	281 trillion	281 trillion
Refresh rate(Hz)	≥1920	≥1920	≥1920	≥1920	≥1920
Pixel matrix per panel	168X168	128X128	104X104	84X84	80X80
Pixel matrix per sq.m	112896	65536	43264	28247	25600
Viewing angle ( H/V)	140/140 deg.	140/140 deg.	140/140 deg.	140/140 deg.	140/140 deg.
Power consumption (W/sq.m)	630/220 (max/avg)	600/210 (max/avg)	710/240 (max/avg)	600/210 (max/avg)	600/210 (max/avg)
IP rate	IP40/IP20	IP40/IP20	IP40/IP20	IP40/IP20	IP40/IP20
Input voltage (VAC)	110/240	110/240	110/240	110/240	110/240
Panel size(L x H x W mm)	500X500X80	500X500X80	500X500X80	500X500X80	500X500X80
Panel weight(kgs)	8(Alu.)	8(Alu.)	8(Alu.)	8(Alu.)	8(Alu.)

\*Specification subjected to change without prior notice.

## Applications



Nightclub



Concert

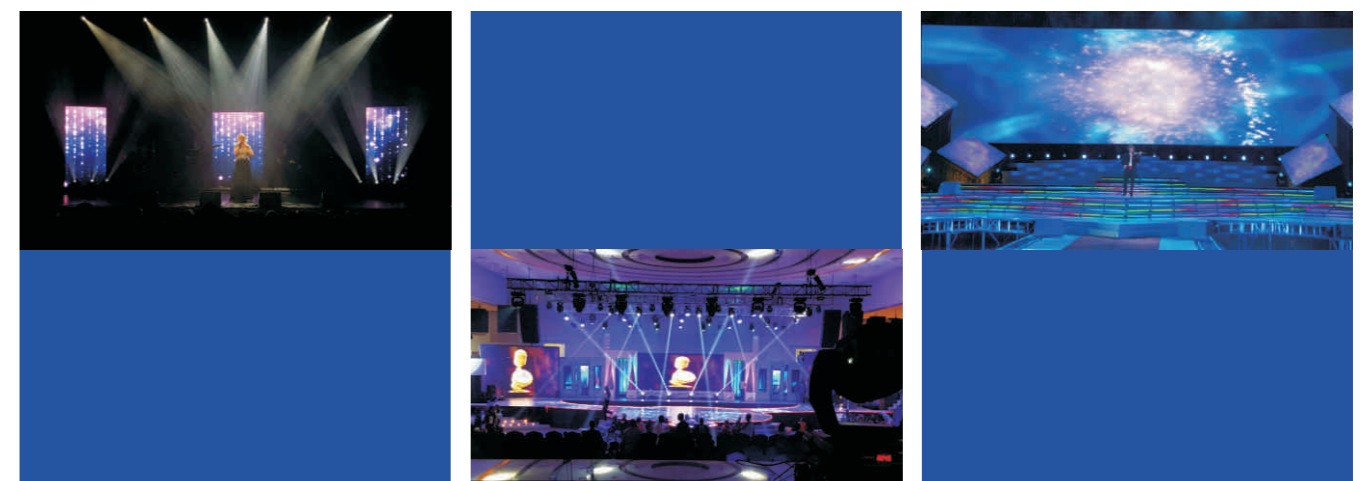


Exhibition



Press conference

## Show Case

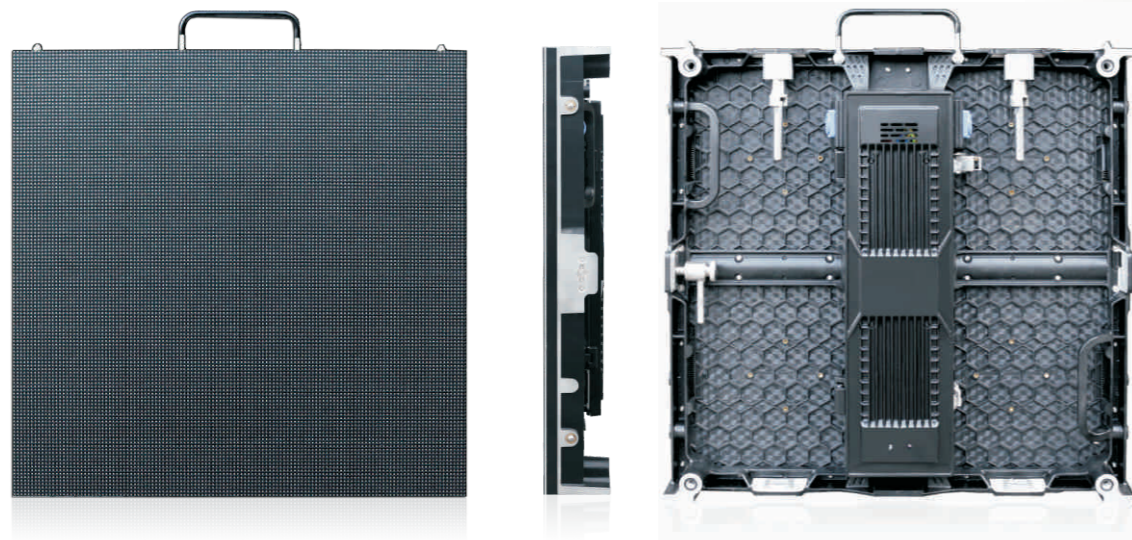


# S series(s)

Outdoor Rental LED Display

## Features

- ▶ 4"H" performance
- ▶ Fast assembling
- ▶ Mistake tracking system
- ▶ Light and thinner



## Parameters

Value	S3	S4	S5	S6
Pixel pitch(mm)	3.91	4.81	5.95	6.25
Brightness(nits)	4000	4000	4000	4000
Pixel configuration	SMD	SMD	SMD	SMD
Colours	281 trillion	281 trillion	281 trillion	281 trillion
Refresh rate(Hz)	≥1920	≥1920	≥1920	≥1920
Pixel matrix per panel	128X128	104X104	84X84	80X80
Pixel matrix per sq.m	65536	43264	28247	25600
Viewing angle ( H/V)	140/140 deg.	140/140 deg.	140/140 deg.	140/140 deg.
Power consumption (W/sq.m)	800/280(max/avg)	750/260(max/avg)	800/280 (max/avg)	800/280 (max/avg)
IP rate	IP65/IP43	IP65/IP43	IP65/IP43	IP65/IP43
Input voltage (VAC)	110/240	110/240	110/240	110/240
Panel size(L x H x W mm)	500X500X80	500X500X80	500X500X80	500X500X80
Panel weight(kgs)	9(Alu.)	9(Alu.)	9(Alu.)	9(Alu.)

\*Specification subjected to change without prior notice.

## Applications



Stage



Concert

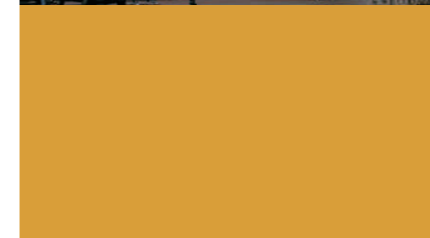
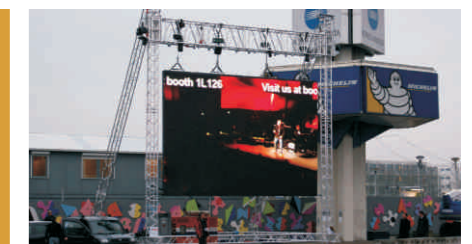


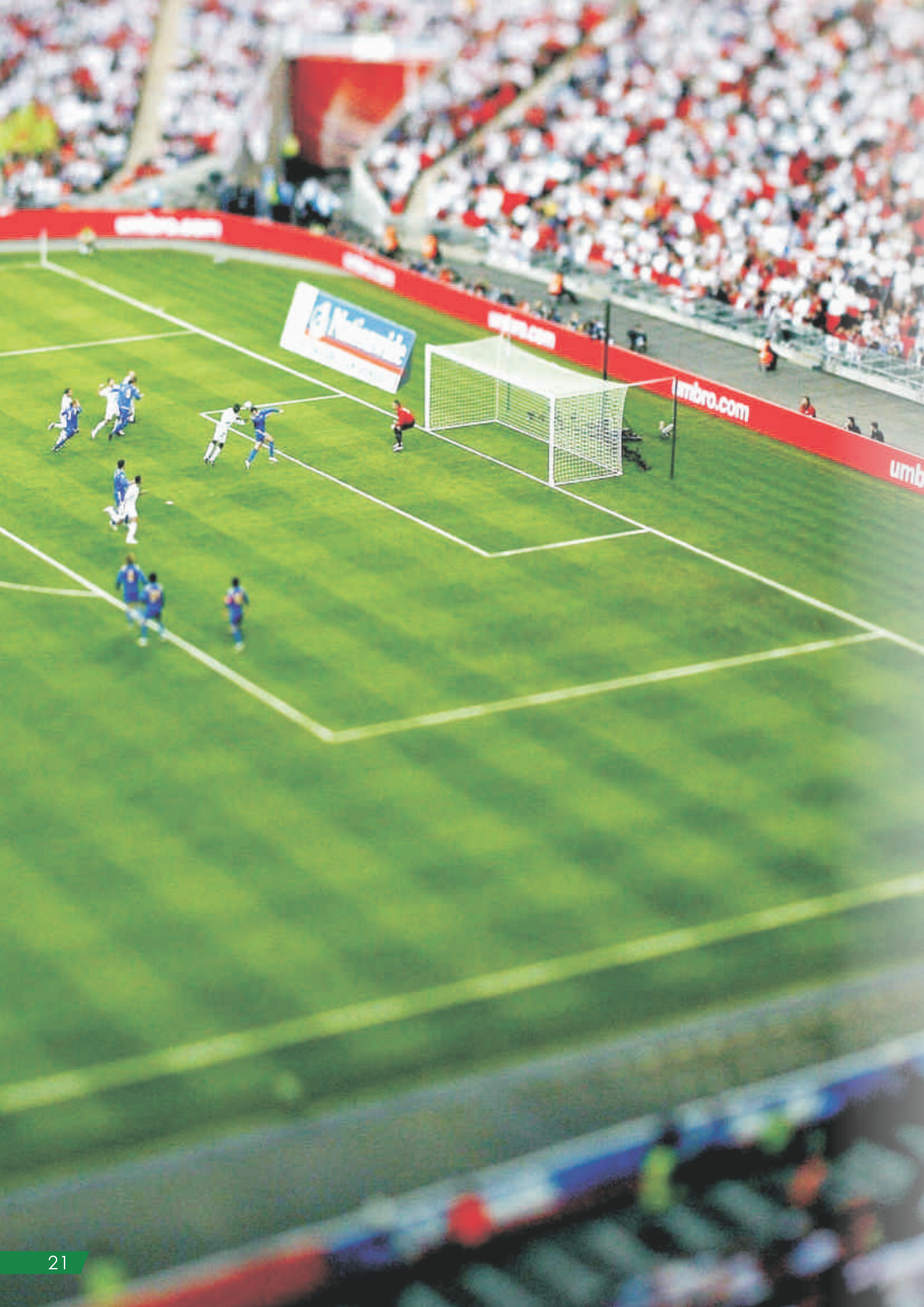
Exhibition



Press conference

## Show Case





**SPORT**

# Q series

Sport LED Display

## Features

- ▶ Cabinet safety design
- ▶ Fast assembling
- ▶ Cabinet viewing angle adjustable
- ▶ Mistake tracking system
- ▶ Lighter and thinner than ever
- ▶ Wide display viewing angle
- ▶ 4"H" performance



## Parameters

Value	Q10	Q13	Q16
Pixel pitch(mm)	10	13.33	16
Brightness(nits)	6500	6000	6500
Pixel configuration	SMD	SMD	SMD
Colours	281 trillion	281 trillion	281 trillion
Refresh rate(Hz)	≥1920	≥1920	≥1920
Pixel matrix per panel	192X96	144X72	120X60
Pixel matrix per sq.m	10000	5628	3906
Viewing angle (H/V)	140/140 deg.	140/140 deg.	140/140 deg.
Power consumption (W/sq.m)	890/310(max/avg)	850/290(max/avg)	930/320(max/avg)
IP rate	IP65/IP43	IP65/IP43	IP65/IP43
Input voltage (VAC)	110/240	110/240	110/240
Panel size(L x H x W mm)	1920X960X120	1920X960X120	1920X960X120
Panel weight(kgs)	60(Alu.)	60(Alu.)	58(Alu.)

\*Specification subjected to change without prior notice.

## Applications



swimming stadiums



Golf course

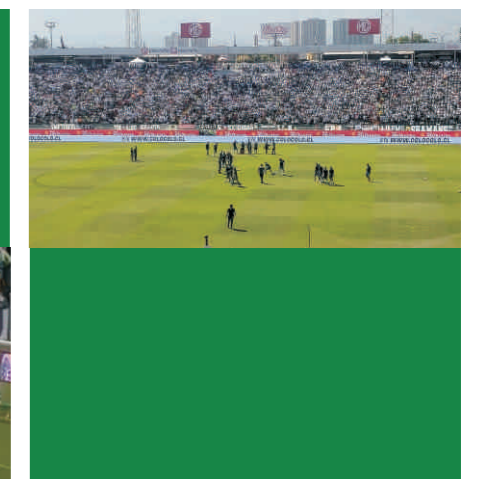


Football field



Basketball court

## Show Case





**SPECIAL**

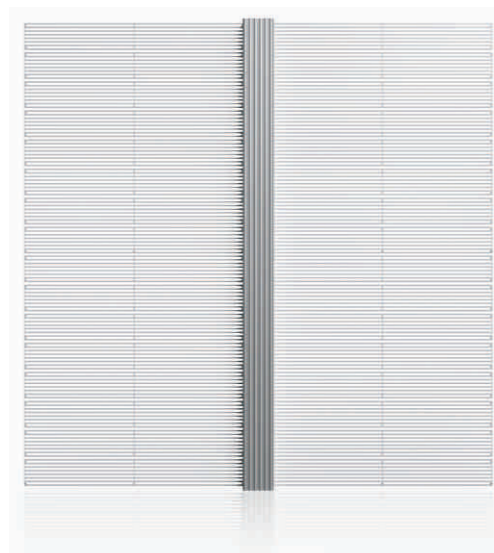


# Glass series

Transparent Screen

## Features

- ▶ Ultralight design
- ▶ High-transparent
- ▶ Aluminum frame design
- ▶ Fast installation
- ▶ Easy maintenance
- ▶ Ultra-energy-saving



## Parameters

Value	Glass3	Glass7	Glass10	Glass15	Glass25
Pixel pitch(mm)	3.91-7.82	7.82-7.82	10.4-10.4	15.64-15.64	25-25
Brightness(nits)	1200	1200	1200	5000	4500
Pixel configuration	SMD	SMD	SMD	SMD	SMD
Colours	281 trillion	281 trillion	281 trillion	281 trillion	281 trillion
Refresh rate(Hz)	≥1920	≥1920	≥1920	≥1920	≥1920
Pixel matrix per panel	256X128	128X128	96X96	64X64	40X40
Pixel matrix per sq.m	32768	16384	9216	4096	1600
Viewing angle ( H/V)	140/140 deg.	140/140 deg.	140/140 deg.	140/140 deg.	140/140 deg.
Power consumption (W/sq.m)	300/100(max/avg)	300/100(max/avg)	300/100(max/avg)	600/210(max/avg)	600/210(max/avg)
IP rate	IP40/IP20	IP40/IP20	IP40/IP20	IP40/IP20	IP40/IP20
Input voltage (VAC)	110/240	110/240	110/240	110/240	110/240
Panel size (L x H x W mm)	1000X1000X80	1000X1000X80	1000X1000X80	1000X1000X80	1000X1000X80
Panel weight(kgs)	15(Alu.)	15(Alu.)	14(Alu.)	14(Alu.)	13(Alu.)

\*Specification subjected to change without prior notice.

## Applications



Shopping mall



Airport

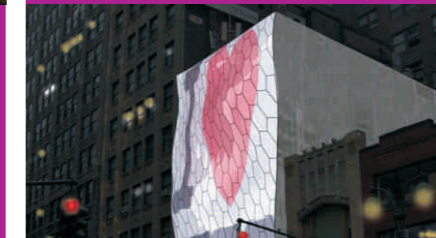
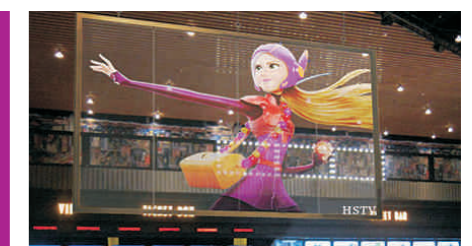


Exhibition



Building

## Show Case



# R series

LED Street Display

## Features

- ▶ Ultrathin design
- ▶ Front-access service
- ▶ Ip65 waterproof
- ▶ Remote group control
- ▶ Smart on/off function automatically



## Parameters

Value	R6 - I	R8 - I	R6 - II	R8 - II
Pixel pitch(mm)	6.4	8	6.4	8
Brightness(nits)	6000	6000	6000	6000
Pixel configuration	SMD	SMD	SMD	SMD
Colours	281 trillion	281 trillion	281 trillion	281 trillion
Refresh rate(Hz)	≥2400	≥1920	≥2400	≥1920
Pixel matrix per panel	160X320	128X256	120X240	96X192
Pixel matrix per sq.m	24414	15625	24414	15625
Viewing angle (H/V)	140/140 deg.	140/140 deg.	140/140 deg.	140/140 deg.
Power consumption (W/sq.m)	870/300(max/avg)	890/310(max/avg)	870/300(max/avg)	890/310(max/avg)
IP rate	IP65/IP43	IP65/IP43	IP65/IP43	IP65/IP43
Input voltage (VAC)	110/240	110/240	110/240	110/240
Panel size(L x H x W mm)	1024X2048X120	1024X2048X120	768X1536X120	768X1536X120
Panel weight(kgs)	76(Alu.)	76(Alu.)	47(Alu.)	47(Alu.)

\*Specification subjected to change without prior notice.

## Applications

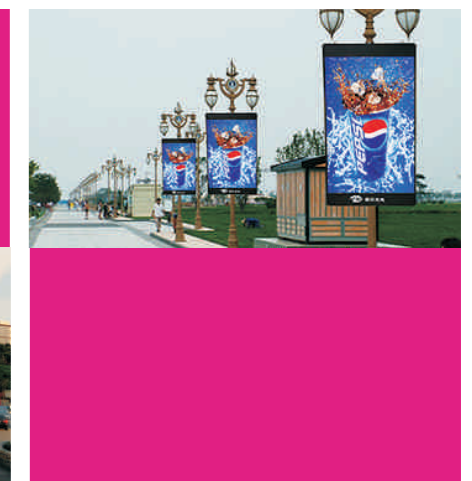
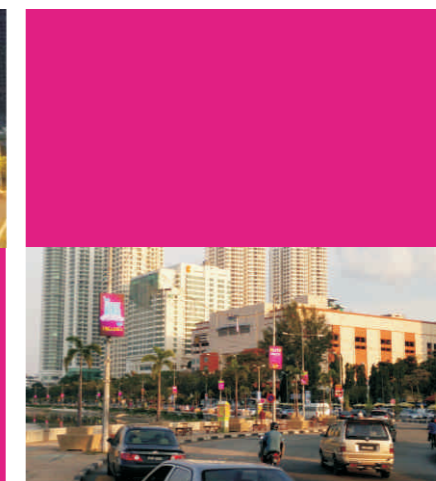


Traffic



Street

## Show Case





**Till now our products are well exported to 100 countries  
with more than 1000 cases all over the world.**